

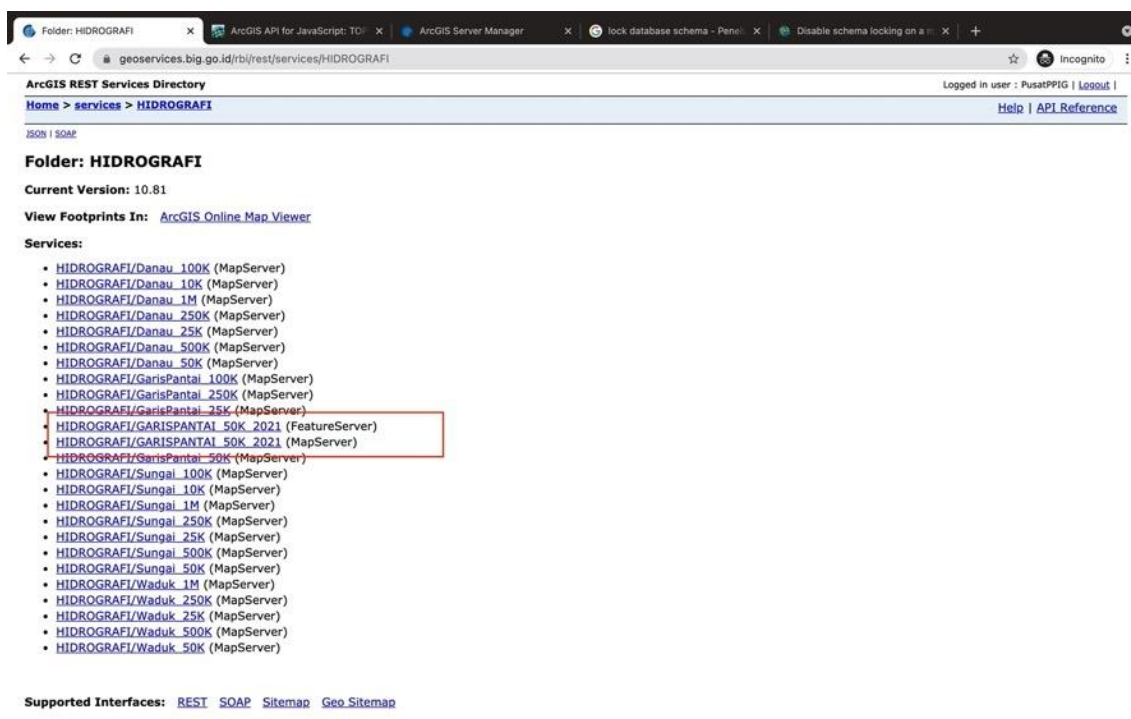
# Panduan Menggunakan Services

## Garis Pantai 50K 2021

Wendra 10 September 2021 – Pusat Pengelolaan dan Penyebarluasan IG - BIG

1. Mengakses GIS Server Garis Pantai Badan Informasi Geospasial di

<https://geoservices.big.go.id/rbi/rest/services/HIDROGRAFI>



2. Mengambil URL GIS Services untuk GARISPANTAI

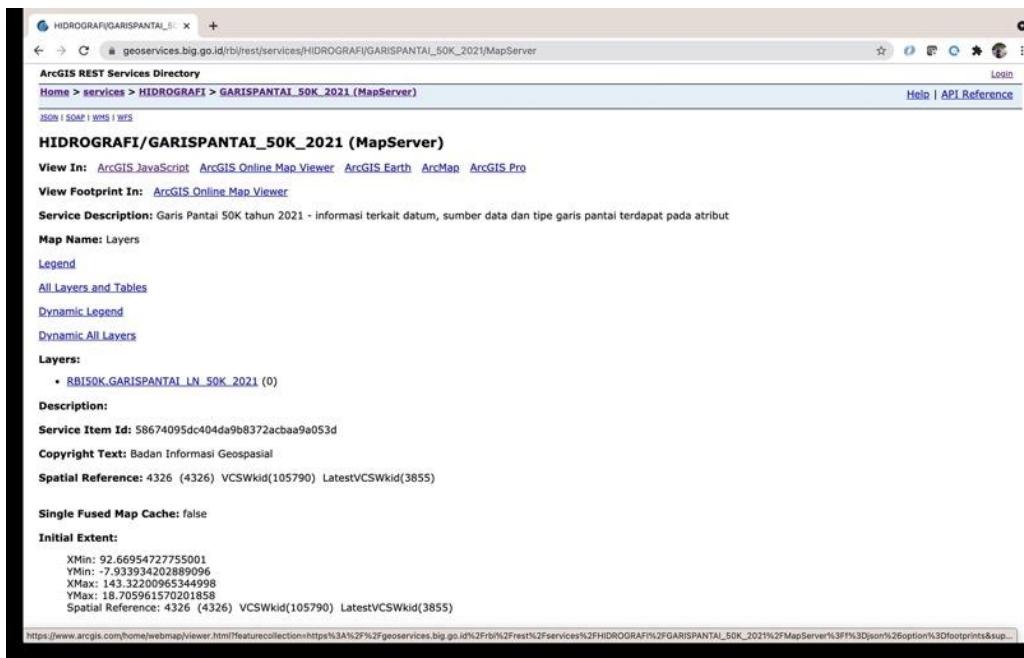
- a. Tipe URL Mapservices :

[https://geoservices.big.go.id/rbi/rest/services/HIDROGRAFI/GARISPANTAI\\_50K\\_2021/MapServer](https://geoservices.big.go.id/rbi/rest/services/HIDROGRAFI/GARISPANTAI_50K_2021/MapServer)



b. Tipe URL Feature Services :

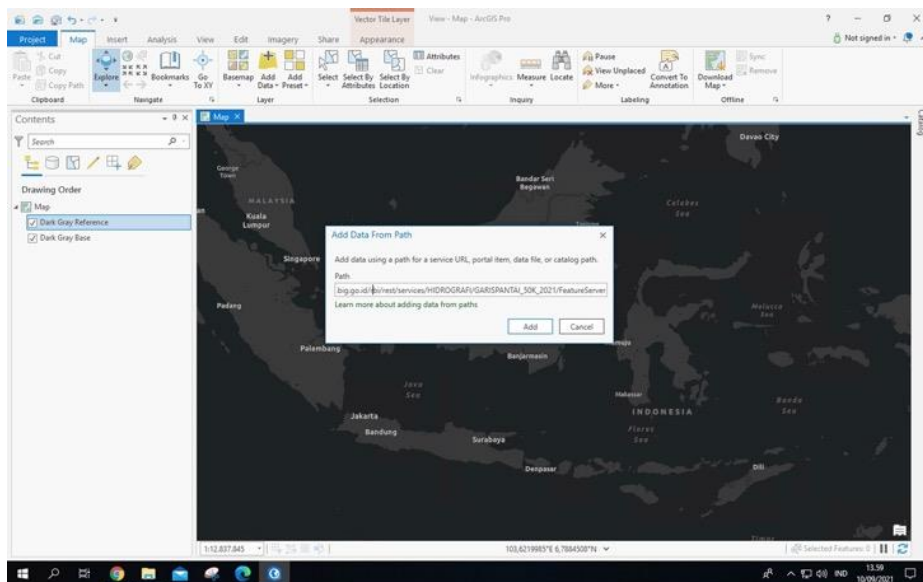
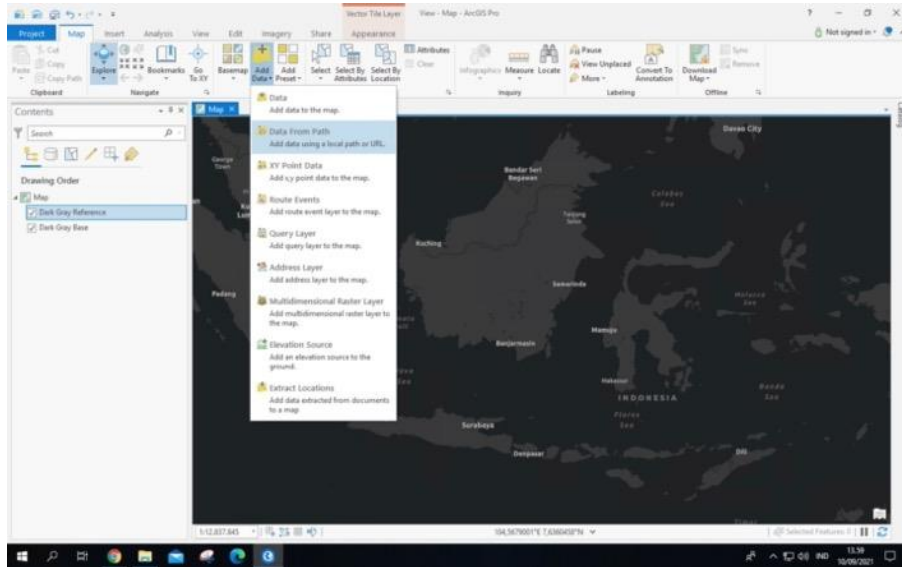
[https://geoservices.big.go.id/rbi/rest/services/HIDROGRAFI/GARISPANTAI\\_50K\\_2021/MapServer](https://geoservices.big.go.id/rbi/rest/services/HIDROGRAFI/GARISPANTAI_50K_2021/MapServer)



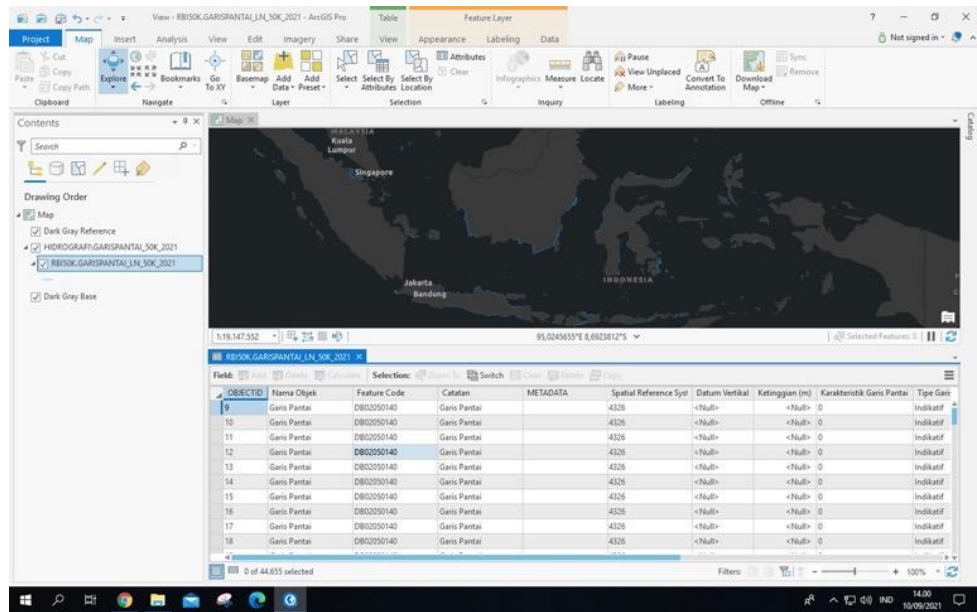
### 3. Menampilkan di ArcGIS Pro

#### a. Feature Services

- Mengcopy url  
[https://geoservices.big.go.id/rbi/rest/services/HIDROGRAFI/GARISPANTAI\\_50K\\_2021/FeatureServer](https://geoservices.big.go.id/rbi/rest/services/HIDROGRAFI/GARISPANTAI_50K_2021/FeatureServer)
- Paste url tersebut di menu

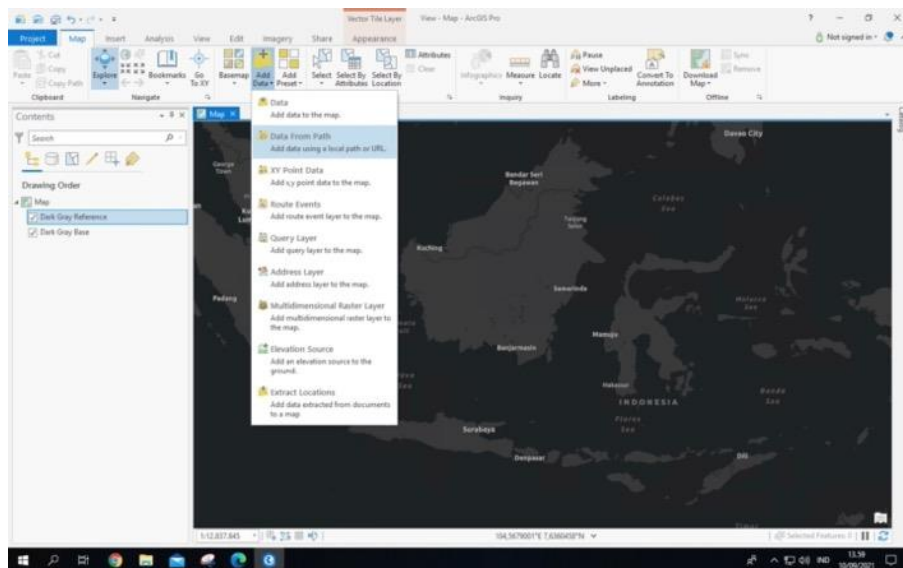


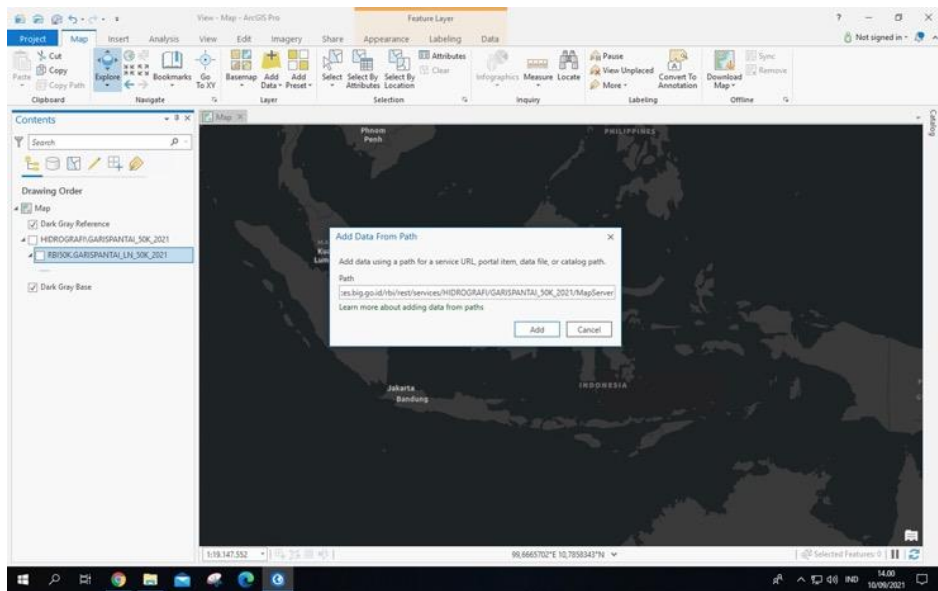
- Services Feature siap digunakan



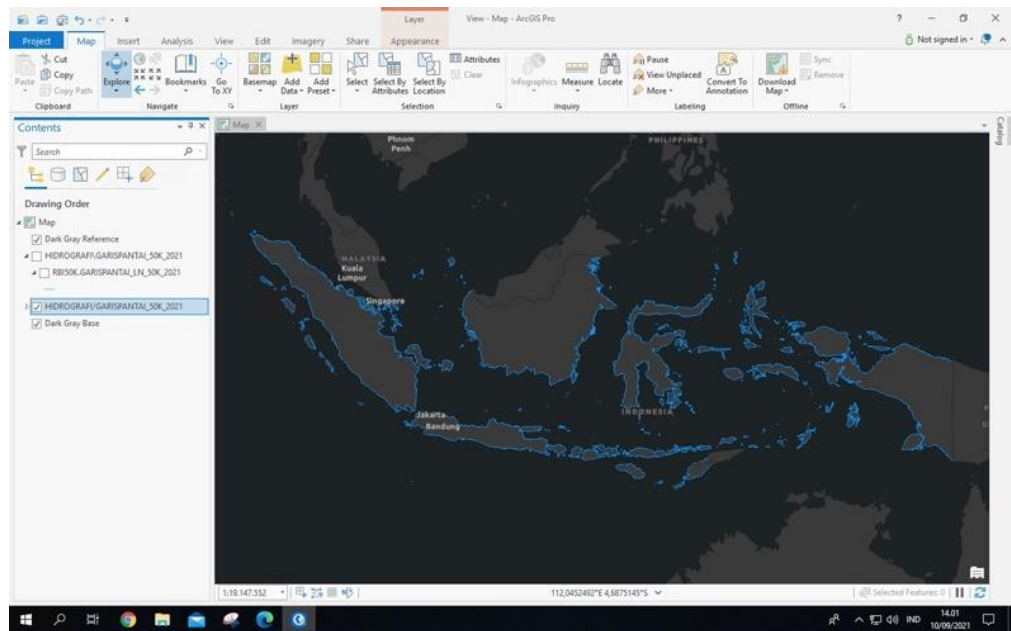
## b. Map Services

- Mengcopy url  
[https://geoservices.big.go.id/rbi/rest/services/HIDROGRAFI/GARISPANTAI\\_50K\\_2021/MapServer](https://geoservices.big.go.id/rbi/rest/services/HIDROGRAFI/GARISPANTAI_50K_2021/MapServer)
- Paste url tersebut di menu





- Services Feature siap digunakan



#### 4. Ketentuan

- Feature Services bisa diakses di desktop dan menampilkan atributnya namun tidak bisa di download / extract datanya ke local, saat ini dibatasi untuk rendering 4000 row
- Untuk sekedar menampilkan petanya bisa menggunakan MapServer